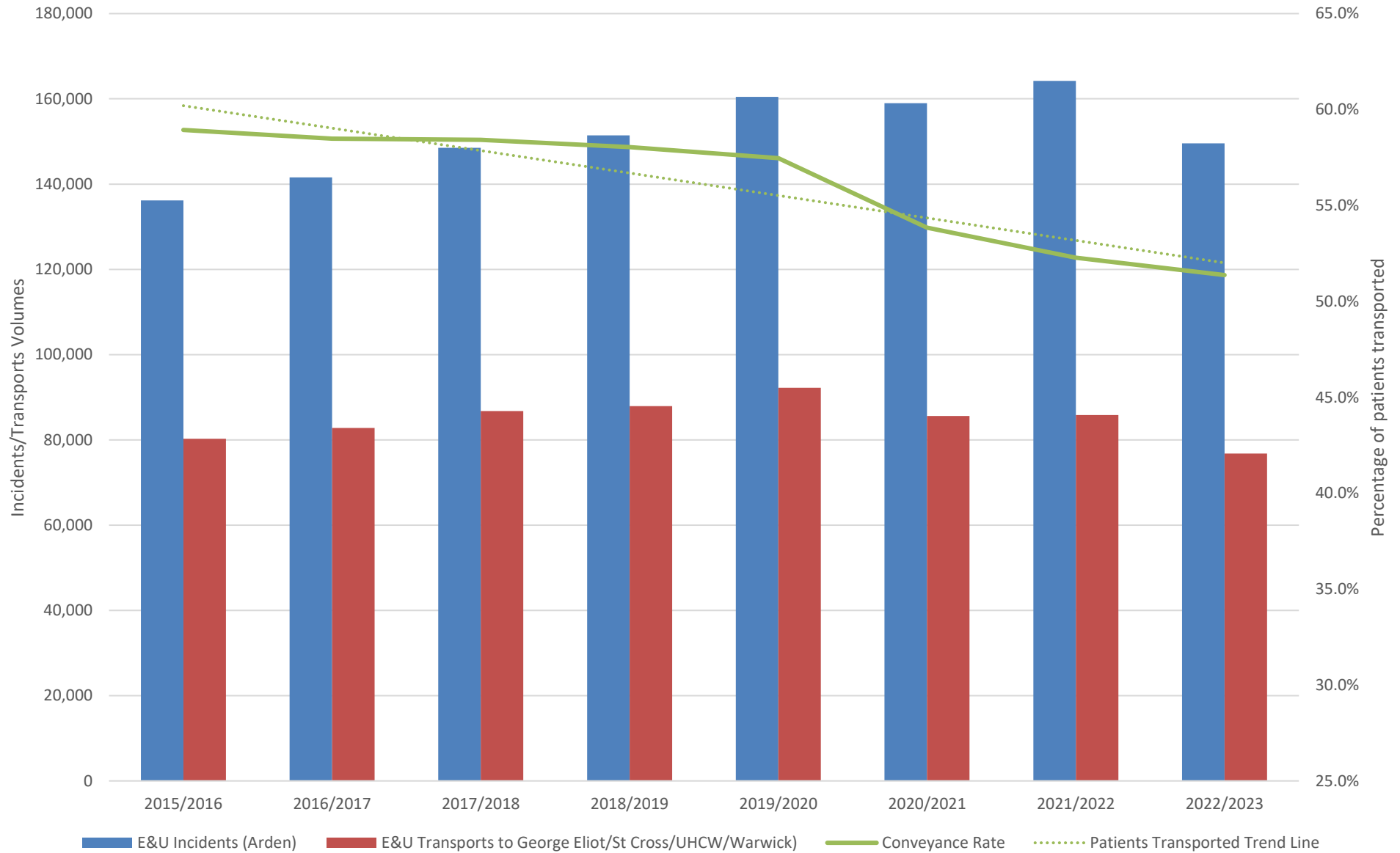




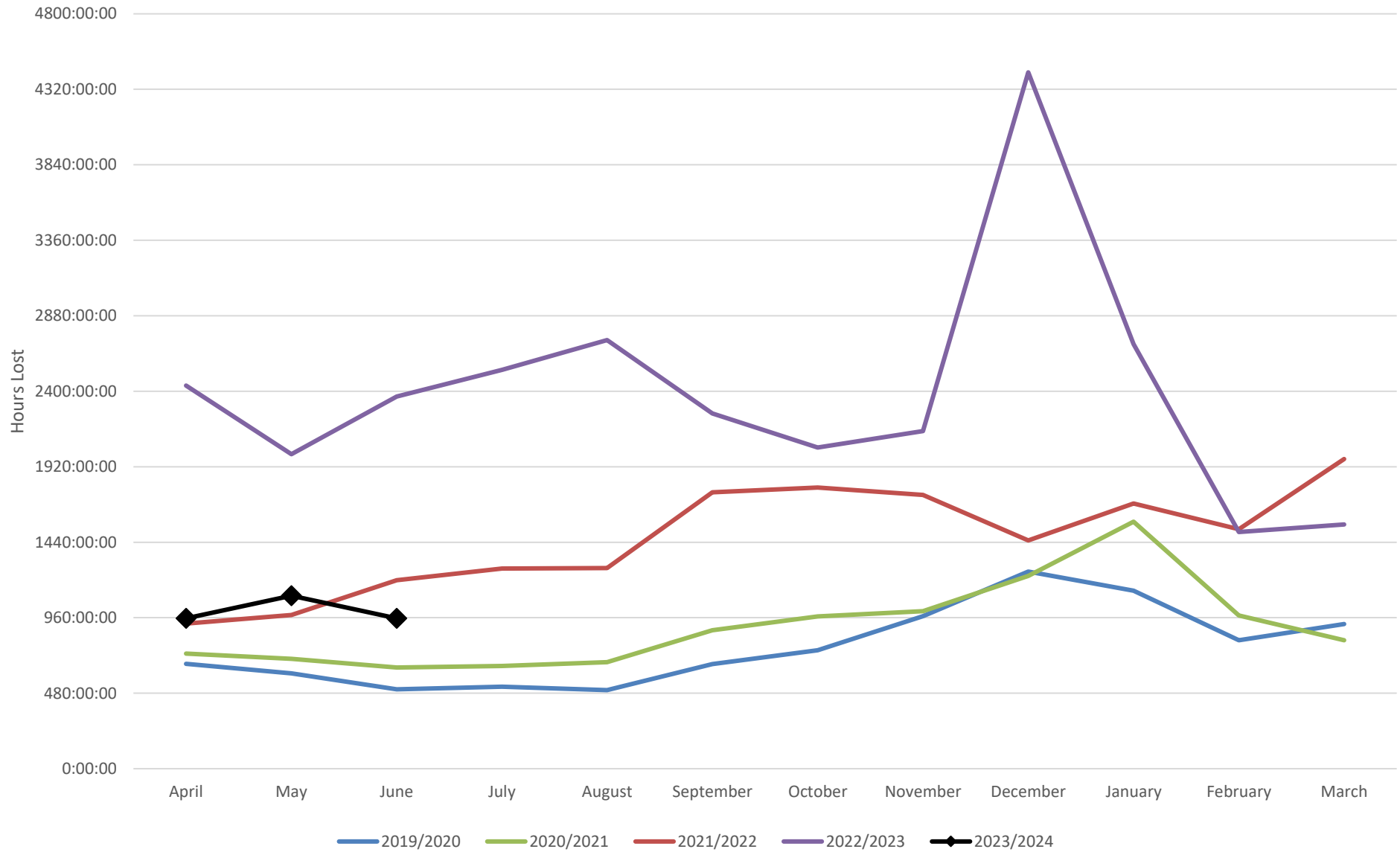
Coventry & Warwickshire ICS Demand, Hospital Delays & Performance

June 2023

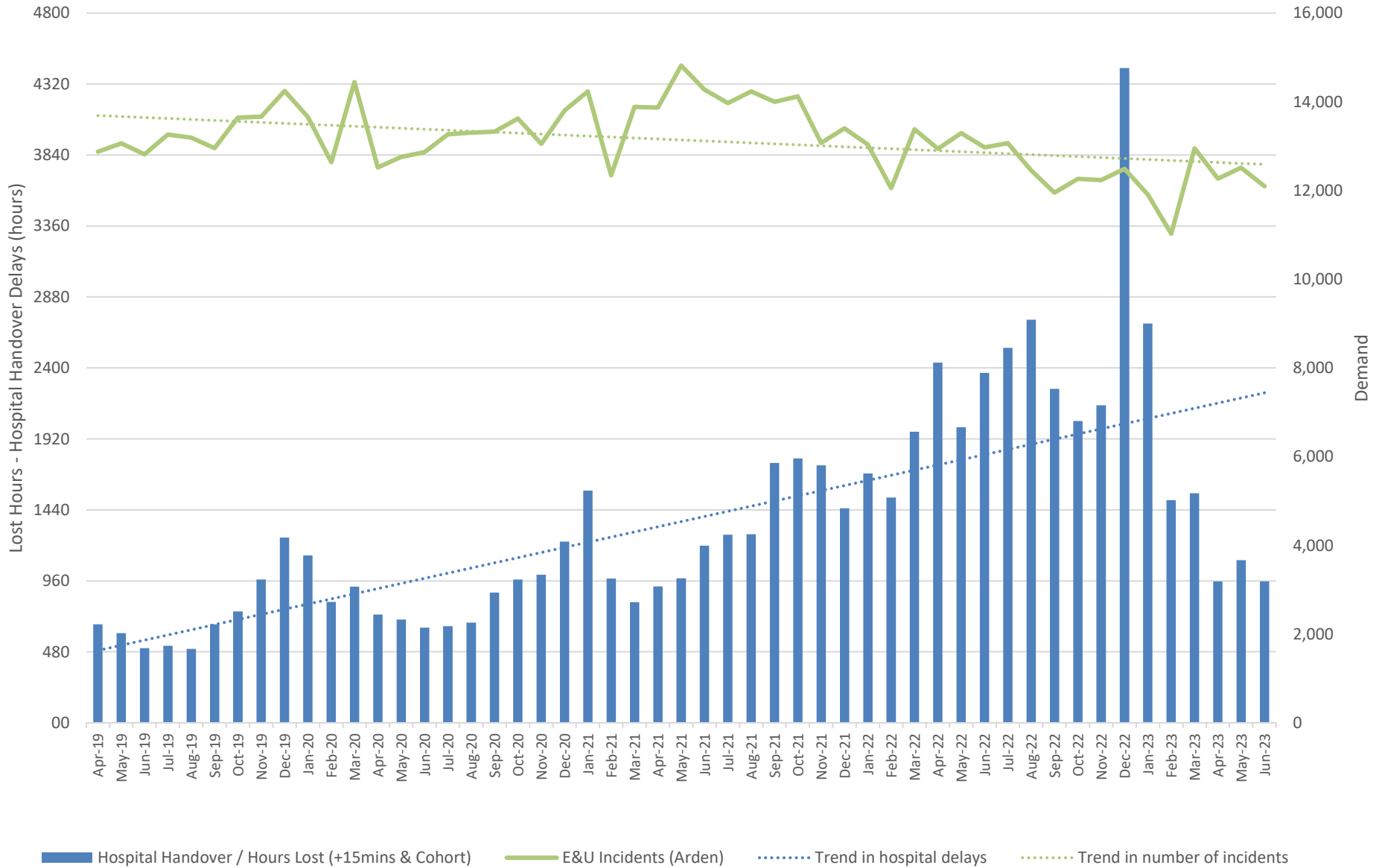
Incidents, Transports & Conveyance Rate Year on Year



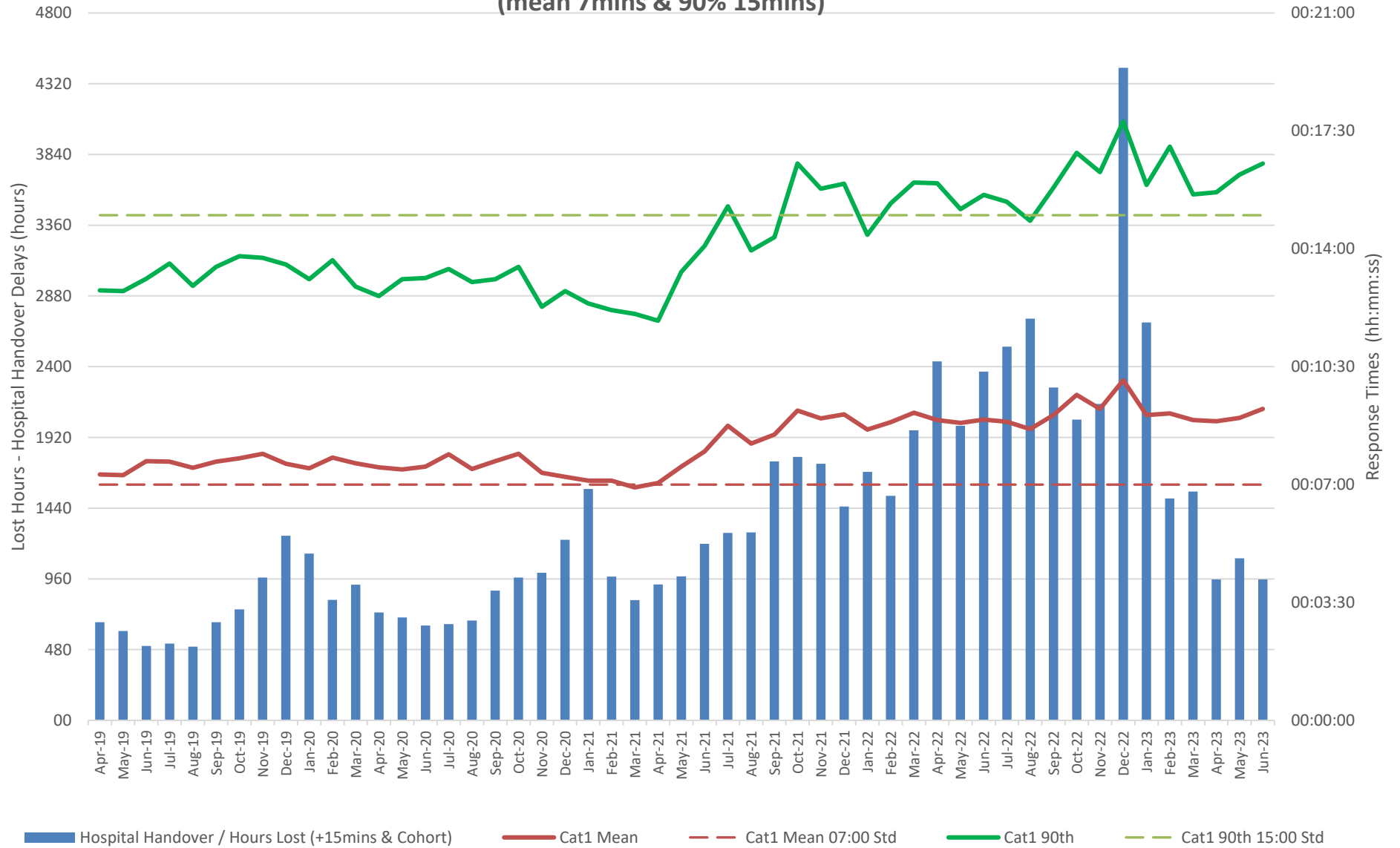
C&W Hospitals Handover Delays >15mins (inc cohorting) - Total Hours by Month



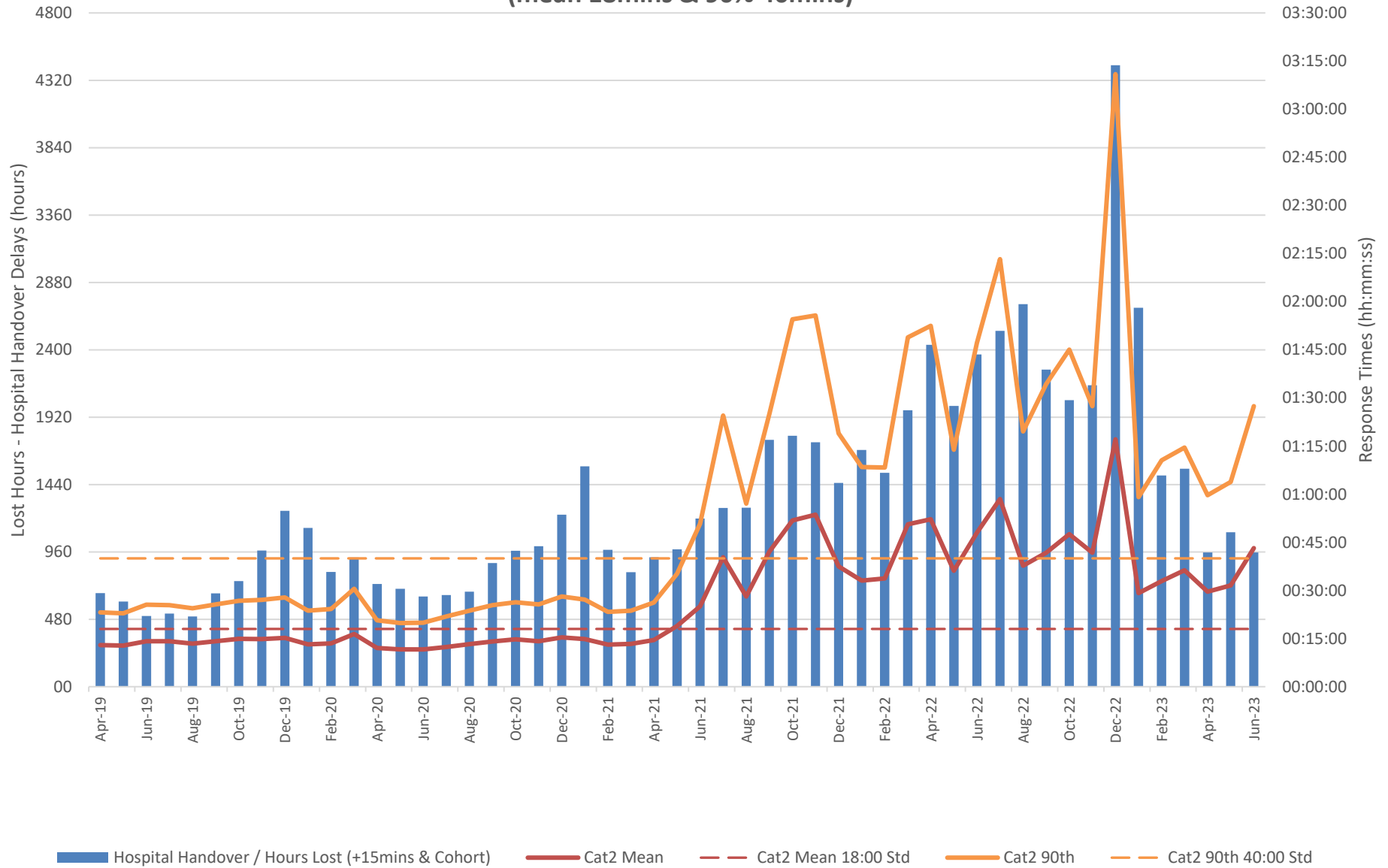
Operational Demand & Handover Delays



Hospital Handover Delays > 15mins and Cohorting vs Operational Performance Cat1 (mean 7mins & 90% 15mins)



Hospital Handover Delays > 15mins and Cohorting vs Operational Performance Cat2 (mean 18mins & 90% 40mins)



Hospital Handover Delays > 15mins and Cohorting vs Operational Performance Cat 3 (mean 60mins & 90% 120mins)

